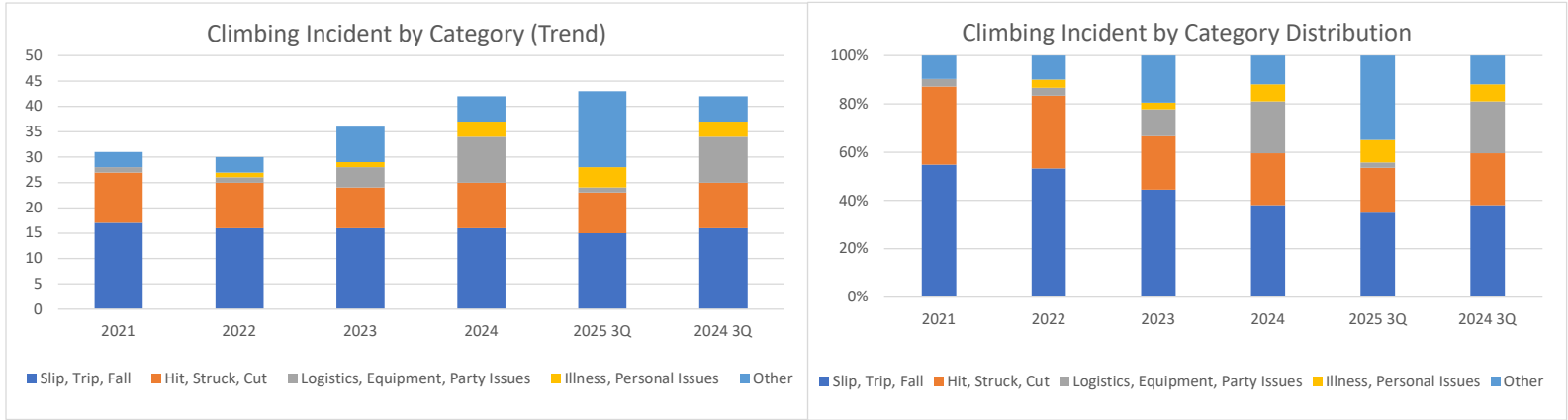


Climbing Incidents by Category

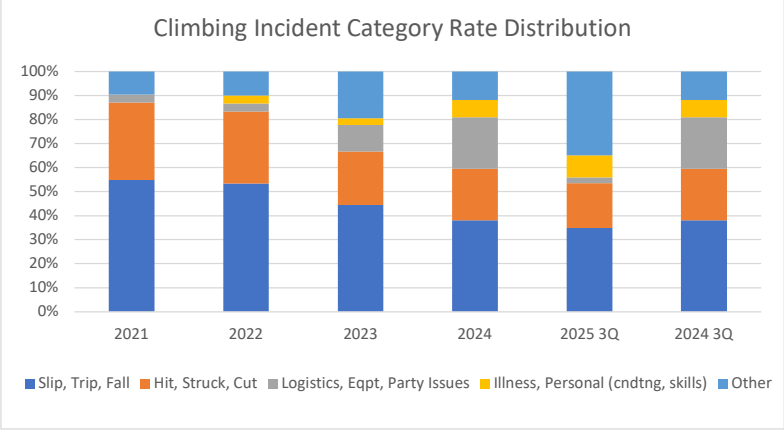
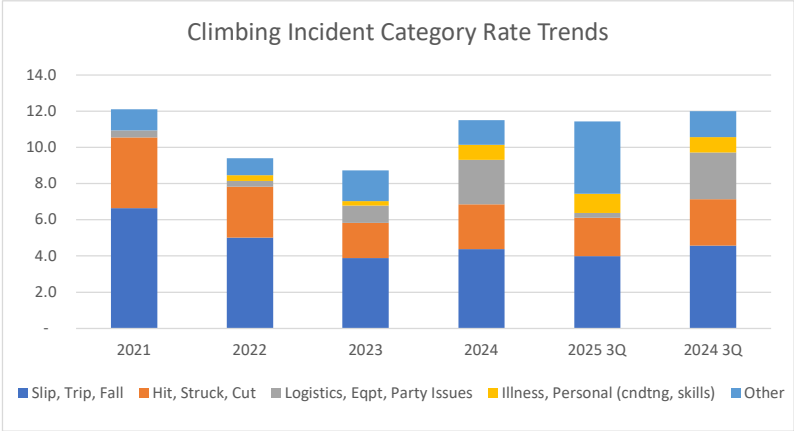
Through 3Q 2025

	2014	2015	2016	2017	2018	2019	2020	2021	2022	2023	2024	2025 3Q	2024 3Q
Slip, Trip, Fall	24	19	25	21	23	14	6	17	16	16	16	15	16
Hit, Struck, Cut	6	8	6	8	7	16	2	10	9	8	9	8	9
Logistics, Equipment, Party Issues	7	4	3	4	7	6	1	1	1	4	9	1	9
Illness, Personal Issues	2	3	4	10	6	2	0	0	1	1	3	4	3
Other	2	3	8	15	7	3	1	3	3	7	5	15	5
Total	41	37	46	58	50	41	10	31	30	36	42	43	42
Slip, Trip, Fall %	59%	51%	54%	36%	46%	34%	60%	55%	53%	44%	38%	35%	38%
Hit, Struck, Cut %	15%	22%	13%	14%	14%	39%	20%	32%	30%	22%	21%	19%	21%
Logistics, Eqpmt, Party Issues %	17%	11%	7%	7%	14%	15%	10%	3%	3%	11%	21%	2%	21%
Illness, Personal Issues %	5%	8%	9%	17%	12%	5%	0%	0%	3%	3%	7%	9%	7%



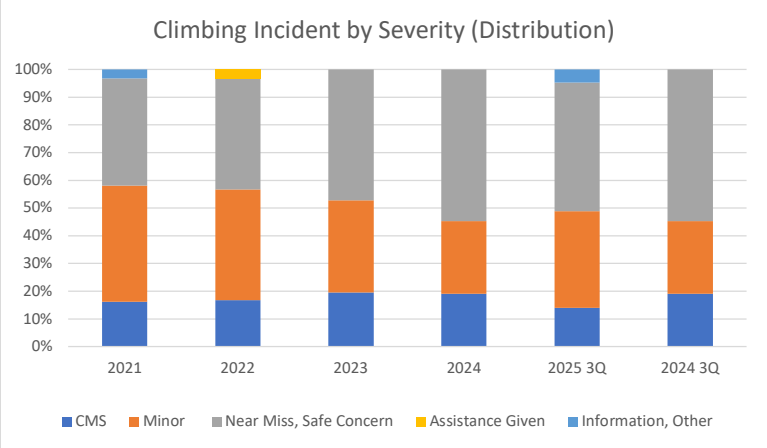
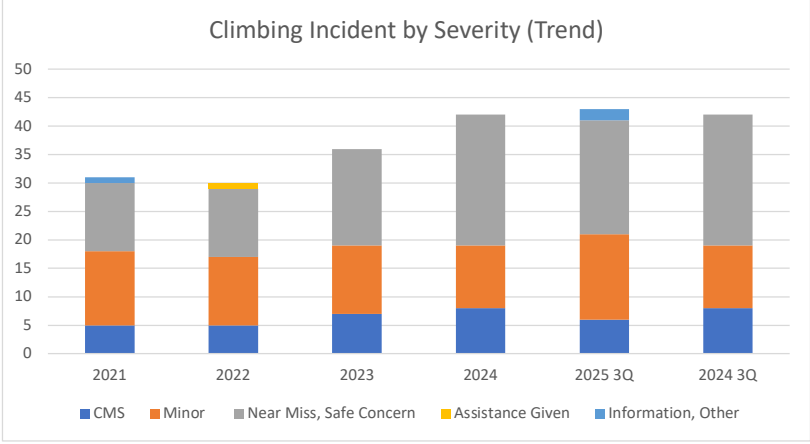
Climbing Incident Rates by Category

	2014	2015	2016	2017	2018	2019	2020	2021	2022	2023	2024	2025 3Q	2024 3Q
Slip, Trip, Fall	6.4	4.7	6.0	4.8	5.1	3.6	7.8	6.6	5.0	3.9	4.4	4.0	4.6
Hit, Struck, Cut	1.6	2.0	1.4	1.8	1.6	4.1	2.6	3.9	2.8	1.9	2.5	2.1	2.6
Logistics, Eqpt, Party Issues	1.9	1.0	0.7	0.9	1.6	1.5	1.3	0.4	0.3	1.0	2.5	0.3	2.6
Illness, Personal (cndtng, skills)	0.5	0.7	1.0	2.3	1.3	0.5	-	-	0.3	0.2	0.8	1.1	0.9
Other	0.5	0.7	1.9	3.5	1.6	0.8	1.3	1.2	0.9	1.7	1.4	4.0	1.4
Total	10.9	9.1	11.1	13.4	11.1	10.4	13.1	12.1	9.4	8.7	11.5	11.4	12.0
Slip, Trip, Fall	59%	51%	54%	36%	46%	34%	60%	55%	53%	44%	38%	35%	38%
Hit, Struck, Cut	15%	22%	13%	14%	14%	39%	20%	32%	30%	22%	21%	19%	21%
Logistics, Eqpt, Party Issues	17%	11%	7%	7%	14%	15%	10%	3%	3%	11%	21%	2%	21%
Illness, Personal (cndtng, skills)	5%	8%	9%	17%	12%	5%	0%	0%	3%	3%	7%	9%	7%
Other	5%	8%	17%	26%	14%	7%	10%	10%	10%	19%	12%	35%	12%



Climbing Incidents by Severity

	Through 3Q 2025												
	2014	2015	2016	2017	2018	2019	2020	2021	2022	2023	2024	2025 3Q	2024 3Q
CMS	15	9	11	13	8	7	2	5	5	7	8	6	8
Minor	26	23	16	25	23	20	2	13	12	12	11	15	11
Near Miss, Safe Concern	0	2	14	17	15	12	5	12	12	17	23	20	23
Assistance Given	0	3	4	2	1	1	0	0	1	0	0	0	0
Information, Other	0	0	1	1	3	1	1	1	0	0	0	2	0
Total	41	37	46	58	50	41	10	31	30	36	42	43	42
CMS %	37%	24%	24%	22%	16%	17%	20%	16%	17%	19%	19%	14%	19%
Minor %	63%	62%	35%	43%	46%	49%	20%	42%	40%	33%	26%	35%	26%
Near Miss, Safety Concern %	0%	5%	30%	29%	30%	29%	50%	39%	40%	47%	55%	47%	55%
Assistance Given %	0%	8%	9%	3%	2%	2%	0%	0%	3%	0%	0%	0%	0%
Information, Other %	0%	0%	2%	2%	6%	2%	10%	3%	0%	0%	0%	5%	0%



Climbing Incident Rates by Severity

	Through 3Q 2025												
	2014	2015	2016	2017	2018	2019	2020	2021	2022	2023	2024	2025 3Q	2024 3Q
CMS	4.0	2.2	2.6	3.0	1.8	1.8	2.6	2.0	1.6	1.7	2.2	1.6	2.3
Minor	6.9	5.7	3.8	5.8	5.1	5.1	2.6	5.1	3.8	2.9	3.0	4.0	3.1
Near Miss, Safety Concern	-	0.5	3.4	3.9	3.3	3.0	6.5	4.7	3.8	4.1	6.3	5.3	6.6
Assistance Given	-	0.7	1.0	0.5	0.2	0.3	-	-	0.3	-	-	-	-
Information, Other	-	-	0.2	0.2	0.7	0.3	1.3	0.4	-	-	-	0.5	-
Total	10.9	9.1	11.1	13.4	11.1	10.4	13.1	12.1	9.4	8.7	11.5	11.4	12.0
CMS	37%	24%	24%	22%	16%	17%	20%	16%	17%	19%	19%	14%	19%
Minor	63%	62%	35%	43%	46%	49%	20%	42%	40%	33%	26%	35%	26%
Near Miss, Safety Concern	0%	5%	30%	29%	30%	29%	50%	39%	40%	47%	55%	47%	55%
Assistance Given	0%	8%	9%	3%	2%	2%	0%	0%	3%	0%	0%	0%	0%
Information, Other	0%	0%	2%	2%	6%	2%	10%	3%	0%	0%	0%	5%	0%

